

# ARTEC MICRO



## Metrology-grade 3D scans

Suitable for quality  
control and precision  
mechanics

/ For small machine parts, jewelry  
and dentistry

/ Professional high accuracy industrial  
desktop 3D scanner



Up to **10 microns**  
accuracy



**Fully-automated**  
desktop 3D scanner



Easy 3D capture  
with just **one click**



# AUTOMATED 3D CAPTURE

## POWERFUL, ROBUST SOFTWARE

Right out of the box, Micro integrates with the industry-acclaimed Artec Studio for real-time digital capture. See your scans coming to life on the screen. After scanning, Artec Studio makes it easy for you to process your data. Simply follow the same series of steps as you would with our handheld scanners, and then export the final 3D model to software such as SOLIDWORKS, PolyWorks Inspector, Control X and Design X.

## THE CUTTING EDGE OF DESKTOP 3D SCANNING

Artec Micro brings the latest in scanning technology to your desktop. Its advanced twin cameras and blue LED lights are perfectly synchronized with Micro's dual-axis rotation system (swing & rotation) to create the ultimate digital copy of your object with a minimum of frames captured.

## USER-FRIENDLY 3D SCANNING

Compact and ready to scan in seconds. Simply mount the object on the circular scanning platform, and you're ready to scan. Choose from a variety of smart scanning paths. Then watch in real time as your scan unfolds on the screen in jaw-dropping detail.

Only a minimum of training is needed with Micro. After a quick introduction, you will already be scanning on your own.

Maximum object size:  
90 mm×60 mm×60 mm





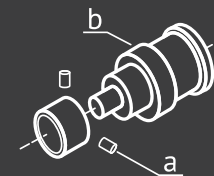
# APPLICATIONS

The possibilities  
are limitless



## QUALITY INSPECTION

Across a variety of industries, there is a growing need for ensuring that product quality levels are as high as possible. Delivering extremely-high-precision scans at up to 10 microns' accuracy, not only can Micro "see" well below the human visibility threshold of 40 microns, but its 3D measurements are among the best in today's cutting edge scanners, making it a perfect choice for inspection and much more.



## REVERSE ENGINEERING

Whether you have a small part to reproduce for which no blueprint exists, or you need to quickly redesign or simply modify an existing part and either mill or 3D print it, Artec Micro can do the job. Accelerate your design, prototype, and production cycle by weeks and save thousands in the process.





## CULTURAL HERITAGE PRESERVATION

Artec Micro gives you the power to make highly-detailed 3D models of a multitude of small cultural objects in just minutes. From there, these models can be archived, or easily shared with researchers and others either locally or around the world, or sent to a 3D printer for printing in a variety of materials.



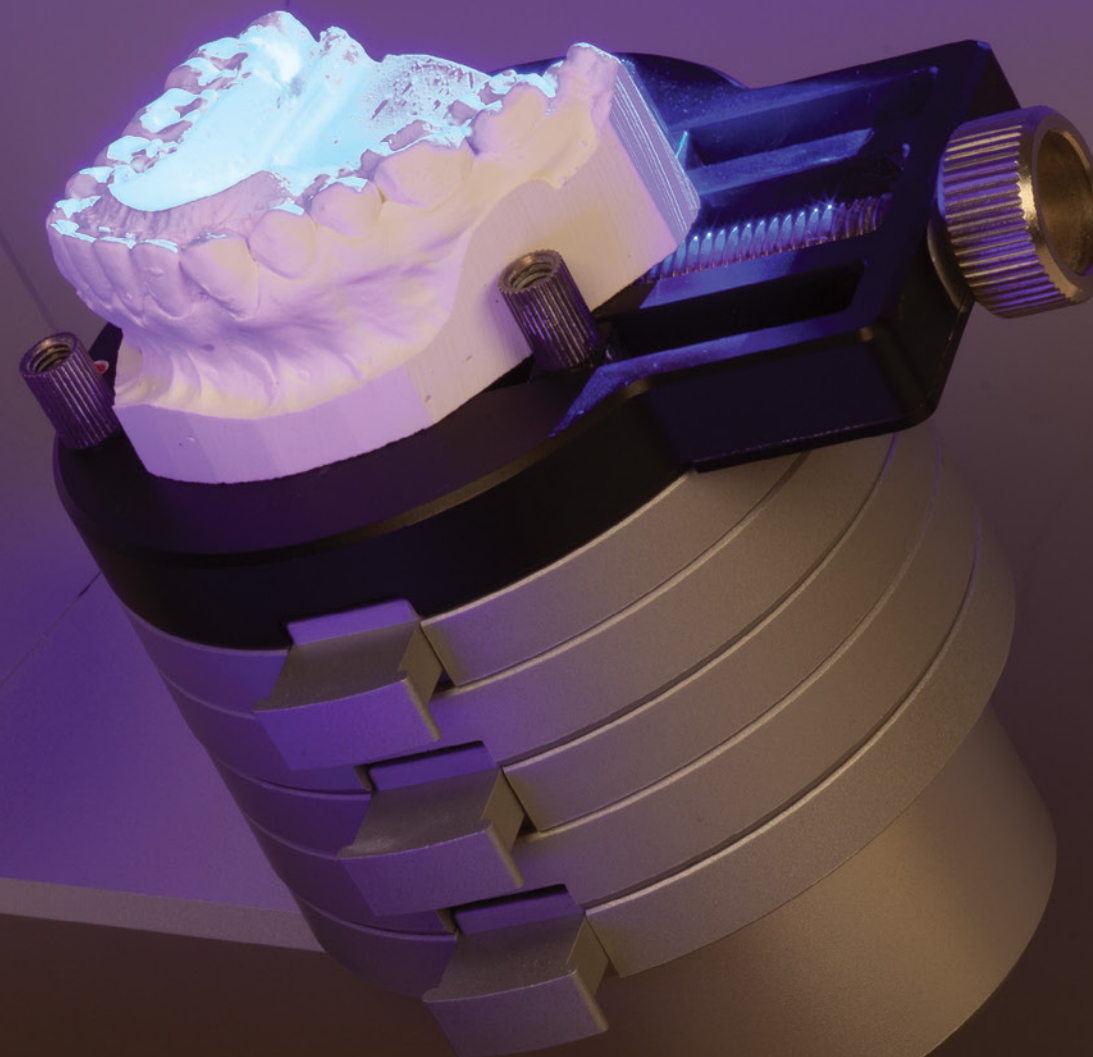
## JEWELRY

Forget about the traditional method of calipers and tracing methods. In minutes, Artec Micro transforms intricate jewelry items into CAD/CAM data for design, modification, 3D printing, and casting. Saves hours of time in the design and production of complex and highly-detailed jewelry pieces such as rings, pendants, bracelets, cameos, and more.



## DENTISTRY

Artec Micro is ready for today's dental practice, creating precise CAD/CAM-ready 3D scans for lab use and 3D printing. Ideal for scanning single teeth, entire arches, or complex impressions. Export from Artec Studio to ExoCAD and other dental software. Perfect for making exact digital reproductions and archival of crowns and bridges, inlays and onlays, dentures, custom abutments, implants, and more.





# SPECIFICATIONS

	MICRO	SPACE SPIDER	EVA	LEO
3D point accuracy, up to	0.01 mm	0.05 mm	0.1 mm	0.1 mm
3D resolution, up to	0.029 mm	0.1 mm	0.5 mm	0.5 mm
Scanner type	Desktop	Handheld	Handheld	Handheld
Ability to capture texture	Yes	Yes	Yes	Yes
Texture resolution	6.4 mp	1.3 mp	1.3 mp	2.3 mp
Colors	24 bpp	24 bpp	24 bpp	24 bpp
Data acquisition speed, up to	1 mln points / sec.	1 mln points / sec.	2 mln points / sec.	3 mln points / sec.
3D exposure time	Customizable	0.0002 s	0.0002 s	0.0002 s
2D exposure time	Customizable	0.0002 s	0.00035 s	0.0002 s
3D light source	Blue LED	Blue LED	Flash bulb (no laser)	VCSEL
Interface	USB 3.0	1 × USB 2.0, USB 3.0 compatible	1 × USB 2.0, USB 3.0 compatible	Wi-Fi, Ethernet, SD card
Supported OS	Windows 7, 8 or 10 x 64	Windows 7, 8 or 10 x 64	Windows 7, 8 or 10 x 64	<b>Scanning:</b> No computer required <b>Post-processing:</b> Windows 7, 8, 10 x 64
Minimum computer requirements (Please refer to <a href="http://www.artec3d.com">www.artec3d.com</a> for detailed hardware requirements)	i5 or i7 recommended, 32GB RAM	i5 or i7 recommended, 18GB RAM	i5 or i7 recommended, 12GB RAM	<b>Scanning:</b> No computer required <b>Post-processing:</b> i5 or i7, 32GB RAM
Power source	AC power	AC power or external battery pack	AC power or external battery pack	Built-in exchangeable battery, optional AC power
Dimensions, HxDxW	290 x 290 x 340 mm	190 x 140 x 130 mm	262 x 158 x 63 mm	231 x 162 x 230 mm
Weight	12 kg / 26.7 lb	0.8 kg / 1.8 lb	0.9 kg / 2 lb	2.6 kg / 5.7 lb
3D mesh formats	OBJ, PLY, WRL, STL, AOP, ASC, PTX, E57, XYZRGB			
3D point cloud formats	BTX, PTX			
Formats for measurements	CSV, DXF, XML			



CERTIFIED  
Solution  
Partner



[www.artec3d.com](http://www.artec3d.com)